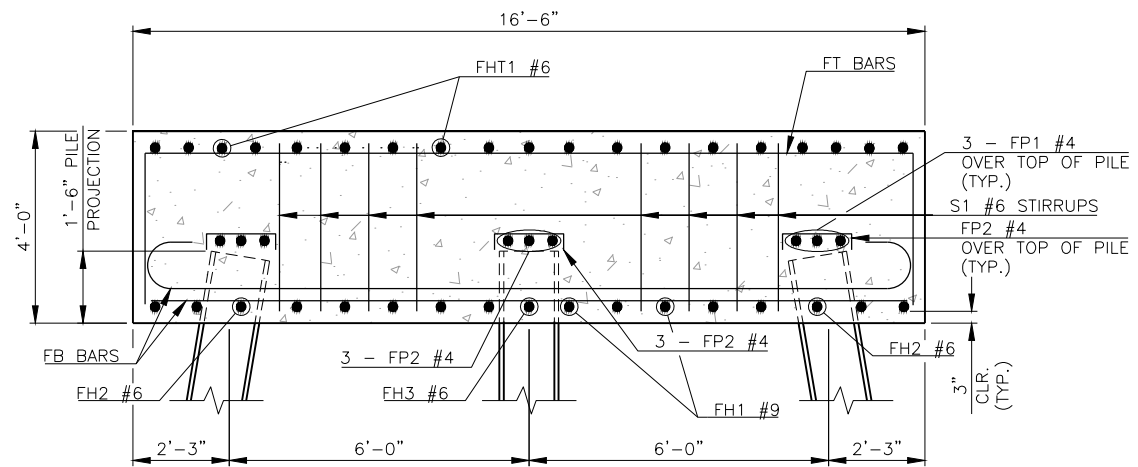
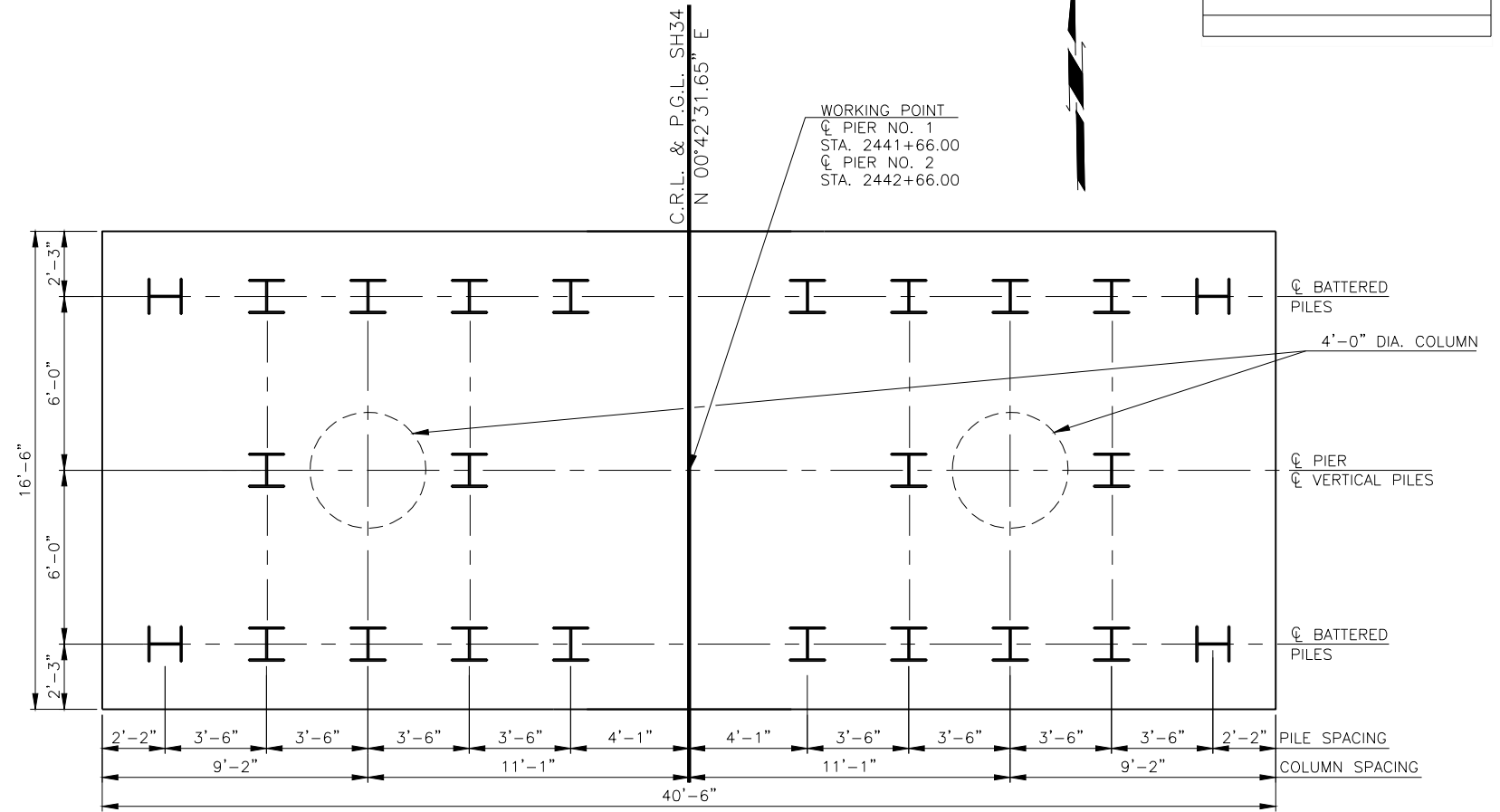


DESCRIPTION	REVISIONS	DATE

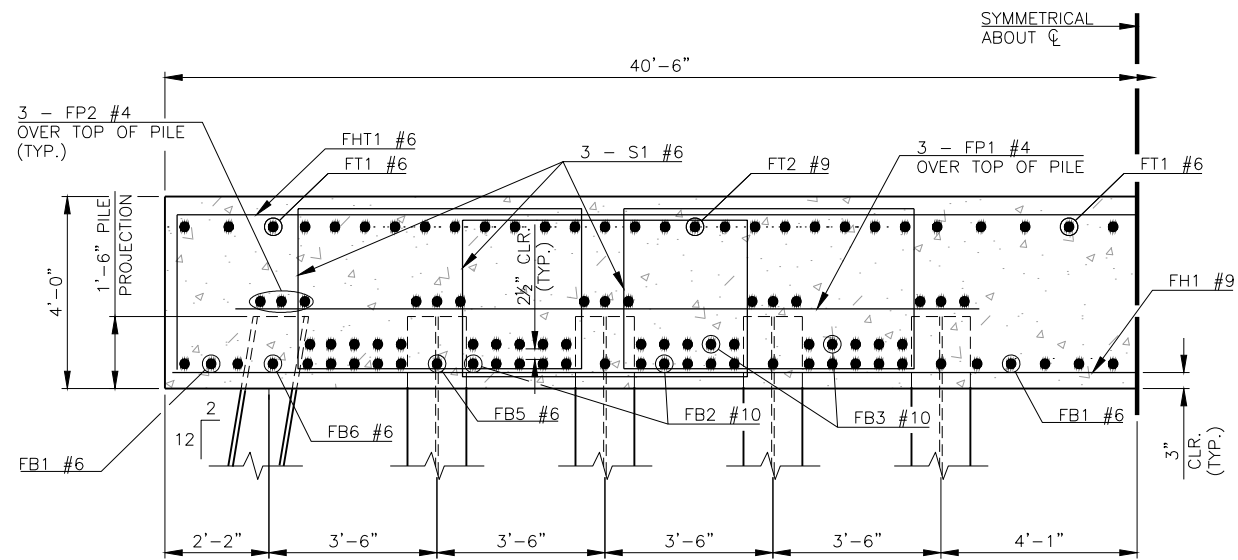


SECTION C-C



PIER FOOTING PLAN

PILE LOCATIONS AND FOOTING DIM.



SECTION D-D

NOTE:
ALL PIER FOOTING PILES ARE HP14X89

NOTE:
PLACE BARS AS SHOWN, MINIMUM HORIZONTAL CLEARANCE BETWEEN BARS IS 3".

NOTE:
FOR REINFORCING PLAN, SEE SHEET 29.

NOTE:
FOR BAR BENDS AND BAR LIST, SEE SHEET 30.

THIS DRAWING IS PRELIMINARY IN NATURE. IT IS NOT A FINAL SIGNED AND SEALED DRAWING

DESIGN	J.W.H.
DRAWN	R.A.P.
CHECKED	J.W.H.
APPROV.	T.A.C.
SQUAD	CEC

SH34 OVER N. PERSIMMON CREEK WOODWARD COUNTY BRIDGE A

**PIER NO. 1 AND 2 DETAILS
(SHEET 2 OF 3)**

JOB PIECE NO. 28827(04) SHEET NO. 28